

## Quarter-Turn Fasteners

**MIL-F-5591C\* Approved**

The SU-2300 Line fasteners are designed for aircraft use and are used on external access panels and internal equipment.

They are also used on demanding non-aircraft application, where their special qualities of vibration endurance and limited sheet separation under overload are needed, or where an enclosed or floating receptacle is required.



SU-2300 Line Fasteners are approved under **MIL-F-5591C\*** for all sizes (2, 5, and 7), all stud types (1, 2, and 3), Class A floating and Class B rigid receptacles, and for the installation holes and stud retainers covered by styles 1 and 2.

SU-2300 Line Fasteners are offered in three sizes.

- ❑ Size 35 studs have a 7/32" (5.56 mm) shank diameter and a clamping tension of 15 lb.
- ❑ Size 5 studs have a 5/16" (7.94 mm) shank diameter and a clamping tension of 35 lb.
- ❑ Size 6 studs have a 3/8" (9.53 mm) shank diameter and a clamping tension of 50 lb.

\* Meets the design, physical and performance requirements of MIL-F-5591C, However, full mechanical properties testing may not be performed on each production lot.

# SU-2300 Line



---

This page intentionally blank

## COMPONENTS

### Studs

Flush Head Stud  
2xx6-20



(Type 1)

Oval Head Stud  
2xx1-20



(Type 2)

Oval Wing Head Stud  
2xx1-W20



(Type 3)

SU-2300 Line Studs are made of a higher-tensile alloy steel than ST-1200 Line studs. Also, they are available in .030" (.08 mm) increments, reducing the extent of sheet separation in case of tensile overload.

### Retainers

Half Grommet  
127H



Solid. Retains when flattened

Snap Ring  
1219-R



Split rings install fast, take little space

Retaining Spring  
1219-24



Holds stud in locking position for alignment with receptacle.

Full Grommets  
1271 and 1276



Prevent panel hole wear, protect panel finish, and reduce stud play.

### Receptacles

Rigid Receptacle  
Type 2xx0-18



(Class B)

Floating Receptacle  
Type 2xx0-18F



(Class A)

SU-2300 receptacles are enclosed to protect the parts, prevent the loss of plating chips, and provide a smooth stud entry. Type "2xx0-18" is used for rigid mounting, and Type "2xx0-18F" provides a floating feature to compensate for misalignment.

# SU-2300 Line



## Selection Procedure

1. Select the appropriate fastener size with reference to the performance table below.
2. Select a stud head style. For example, the flush head type "2xx6-20"
3. Select a stud retainer and part number. For example, an aluminum half grommet type 127H.
4. Determine the total thickness of material to be fastened. See the next page for detailed measurement instructions.
5. Determine the correct stud length for the total thickness of material to be fastened, using the table for the appropriate stud size.
6. Choose either a rigid or floating receptacle.

**Mechanical Properties:** MIL-F-5591C\* (Style 1, Types 1-2-3, Class A & B)

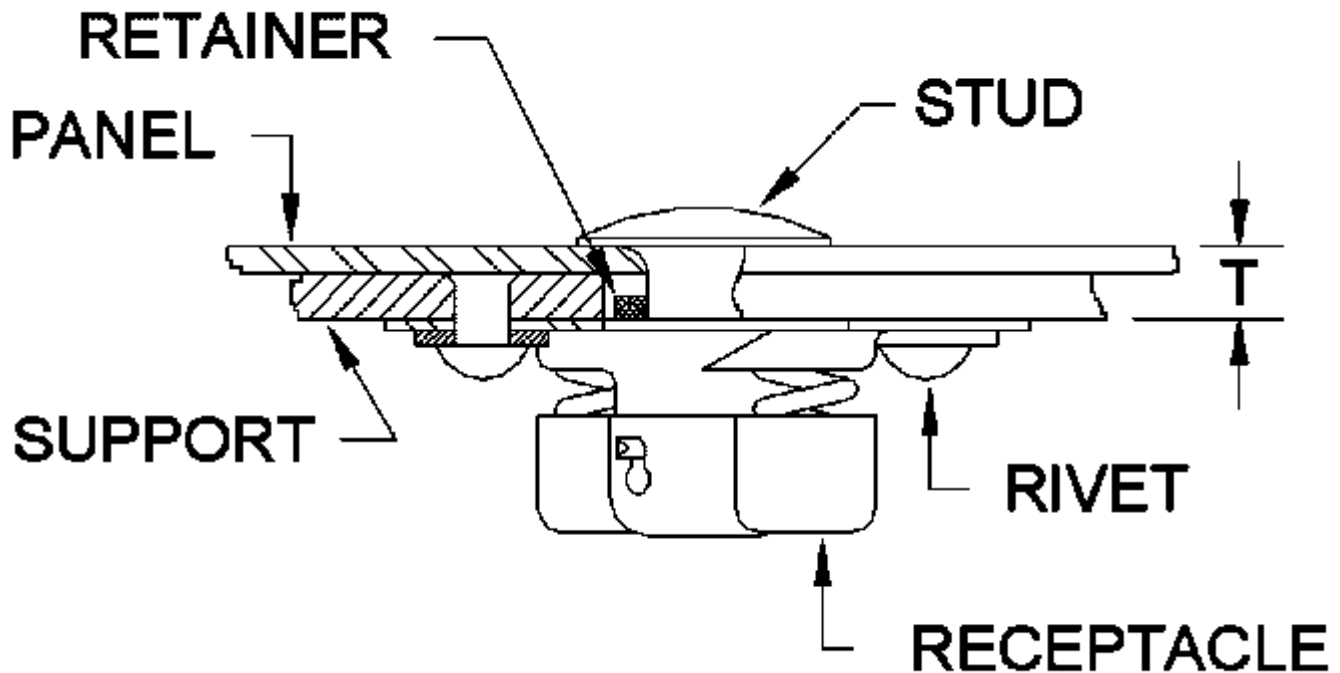
### Performance Table

Size		Locking Torque		Initial Tension Min.	Tension & Shear		Locking Stop Strength	Endurance (Cycles)
AN	DFCI	Minimum	Maximum		Rated	Plus 50%		
7	6	7.5 in.-lb.	18 in.-lb.	50 lb.	700 lb.	1050 lb.	80 in.-lb.	40,000
5	5	5.0 in.-lb.	12 in.-lb.	35 lb.	500 lb.	750 lb.	60 in.-lb.	25,000
2	35	2.5 in.-lb.	8 in.-lb.	15 lb.	200 lb.	300 lb.	30 in.-lb.	5,000

\* Meets the design, physical and performance requirements of MIL-F-5591C. However, full mechanical properties testing may not be performed on each production lot.

## Finding the Total Thickness

Assuming the stud and receptacle to be in locked position, determine the distance between the level of the stud head contact with the top of the panel in which it is retained, and the level of receptacle contact with the underside of the material on which it is mounted. Usually this distance is simply the combined thickness of the stud panel and receptacle support material, but gaskets or standoffs between the panel and the support can also add space. Material between the stud head and top of the panel, such as a full grommet, must also be counted, as must paint thickness applied to every intervening surface. Do not count stud retainer thickness on the panel underside, which enters the support hole.



# SU-2300 Line

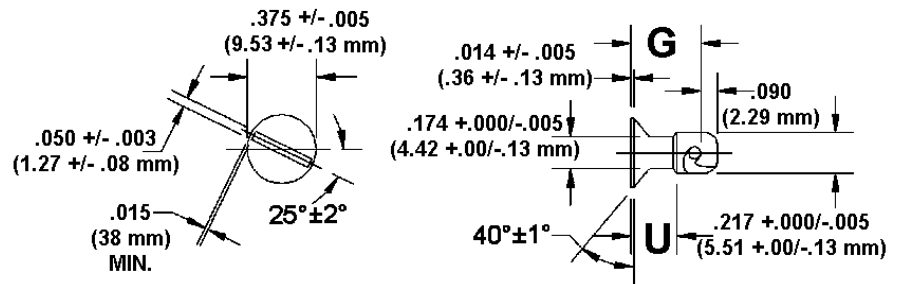


Size 35

Flush, Oval and Wing Head Studs

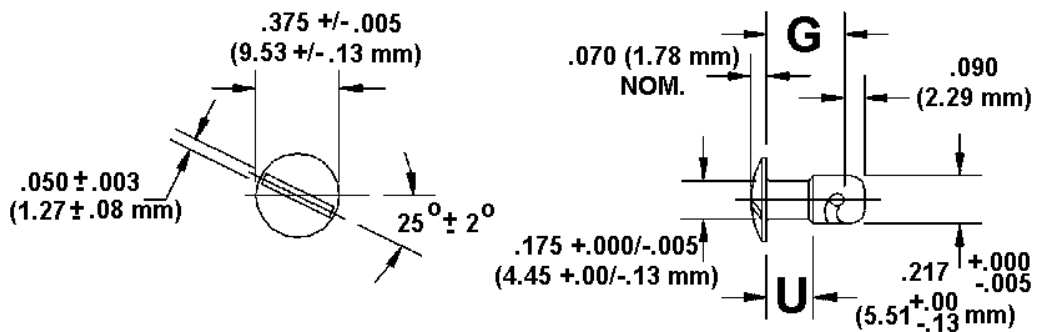
## Flush Head

2356-20 Stud Type 1



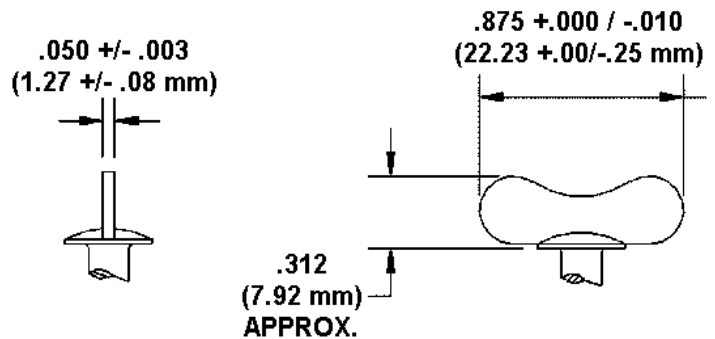
## Oval Head

2351-20 Stud Type 2



## Wing Head

2351-W20 Stud Type 3



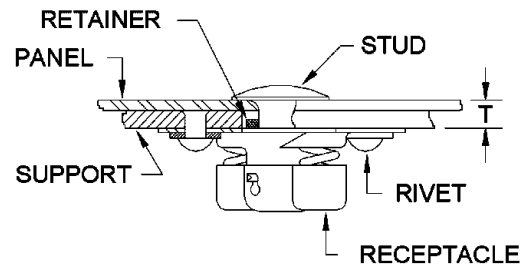
Otherwise same as 2351-20 stud.

## Size 35 Stud Part Numbers

**2 35 1-20 -3 -Z3CT**

① ② ③ ④ ⑤

1. Product Line (2 = SU-2300)
2. Shank Diameter x 1/16" (35 = 3.5)
3. Head Style (1-20 = Oval Head)
4. Stud Length Callout (see table below)
5. Finish Suffix



T TOTAL THICKNESS		STUD LENGTH CALLOUT	STUD SHANK DIMENSIONS				STUD WEIGHTS (LB. EA.)		
			G		U		FLUSH 2356-20	OVAL 2351-20	WING 2351-W20
in.	mm		in.	mm	In.	mm			
.000 - .030	0.00 - 0.76	-3	.260	6.60	.130	3.30	.00305	.00315	.00548
.031 - .060	0.76 - 1.52	-6	.290	7.37	.170	4.32	.00320	.00330	.00563
.061 - .090	1.52 - 2.29	-9	.320	8.13	.170	4.32	.00335	.00345	.00578
.091 - .120	2.29 - 3.05	-12	.350	8.89	.210	5.33	.00350	.00360	.00593
.121 - .150	3.05 - 3.81	-15	.380	9.65	.250	6.35	.00365	.00375	.00608
.151 - .180	3.81 - 4.57	-18	.410	10.41	.280	7.11	.00380	.00390	.00623
.181 - .210	4.57 - 5.33	-21	.440	11.18	.290	7.37	.00395	.00405	.00638
.211 - .240	5.33 - 6.10	-24	.470	11.94	.330	8.38	.00410	.00420	.00653
.241 - .270	6.10 - 6.86	-27	.500	12.70	.370	9.40	.00425	.00435	.00668
.271 - .300	6.86 - 7.62	-30	.530	13.46	.410	10.41	.00440	.00450	.00683
.301 - .330	7.62 - 8.38	-33	.560	14.22	.410	10.41	.00455	.00465	.00698
.331 - .360	8.38 - 9.14	-36	.590	14.99	.450	11.43	.00470	.00480	.00713
.361 - .390	9.14 - 9.91	-39	.620	15.75	.490	12.45	.00485	.00495	.00728

**MATERIALS:** Hardened carbon steel studs, carbon steel wings

**FINISH:** Zinc Trivalent Clear .0003 thick. Trivalent Chromate Clear with Sealer (RoHS Compliant) per ASTM-B-633, Type III, SC2 Clear

**FINISH SUFFIX:** -Z3CT.

The above mentioned finish will be supplied as the standard finish upon depletion of existing stock which are finished as follows: Cadmium electroplated .0003 thick, clear chromate per QQ-P-416, Type I, Class 2, Clear Finish suffix -C3C.

See page **SU-25** for additional finishes that may be available for this part.

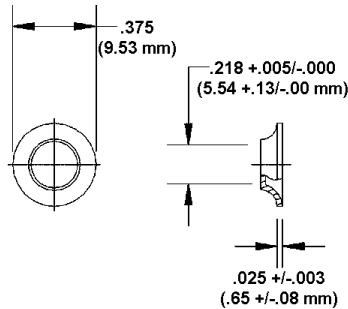
# SU-2300 Line



## Size 35 Retainers

### TYPE 127H HALF GROMMET

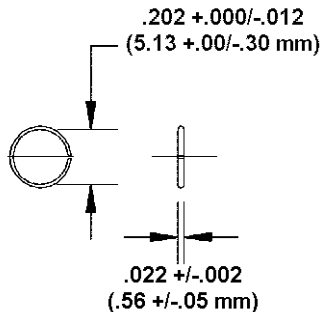
For use with 2356-20, 2351-20, and 2351-W20 Studs



**Part No.:** 127H-35  
**Material:** Aluminum  
**Weight:** .000219 lb.

### SNAP RING

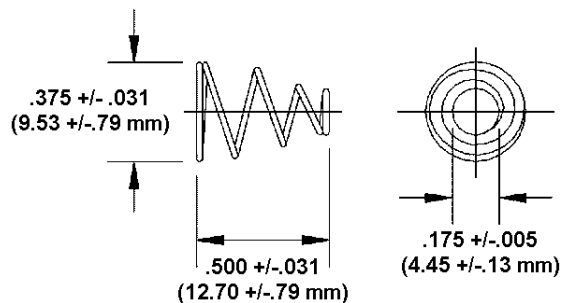
For use with 2356-20, 2351-20, and 2351-W20 Studs



**Part No.** 1219-R35-SS  
**Material:** Stainless Steel, 300 series, spring temper.  
**Weight:** .00009 lb.

### RETAINING SPRING

For use with 2351-20 and 2351-W20 Studs



**Part No.:** 1219-24551-SS  
**Material:** Stainless Steel, 300 series, spring temper.  
**Weight:** .00038 lb.





# SU-2300 Line

---

This page intentionally blank

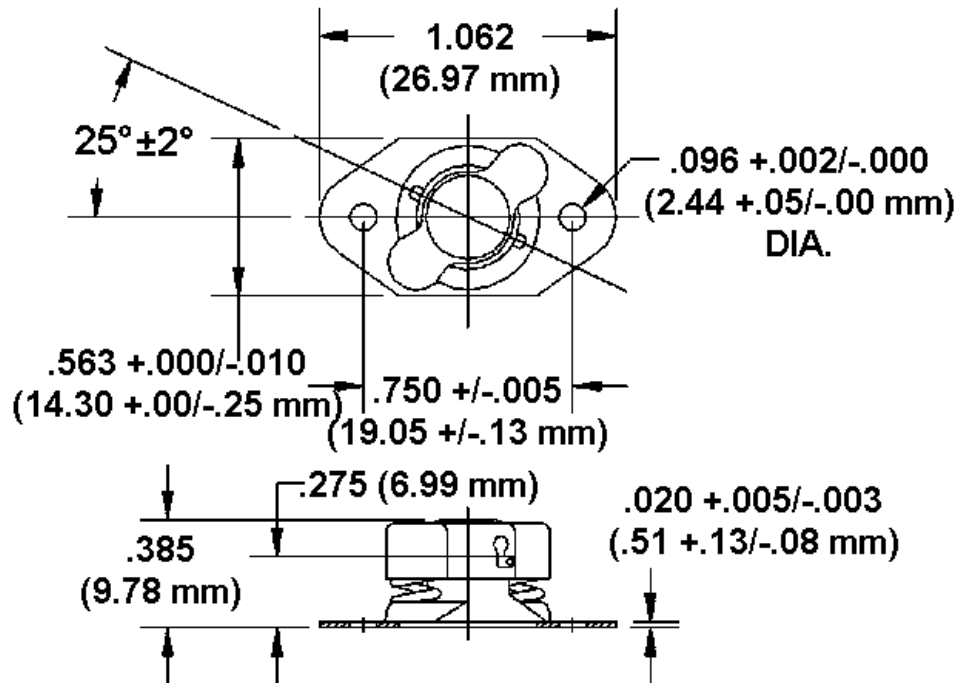
# SU-2300 Line



## Size 35 Receptacles

### Rigid Receptacle 2350-18-Z3CT (Class B)

For use with any size 35 SU-2300 Line Stud.



#### MATERIALS:

Receptacle base and Spring Cap: steel

Spring and Pin: Music Wire

**FINISH:** Zinc Trivalent Clear .0003 thick. Trivalent Chromate Clear with Sealer (RoHS Compliant) per ASTM-B-633, Type III, SC2 Clear

**FINISH SUFFIX:** -Z3CT.

The above mentioned finish will be supplied as the standard finish upon depletion of existing stock which are finished as follows: Cadmium electroplated .0003 thick, clear chromate per QQ-P-416, Type I, Class 2, Clear Finish suffix -C3C.

See page **SU-25** for additional finishes that may be available for this part.

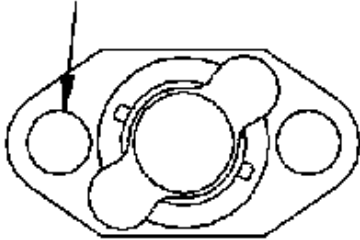
**Weight:** .0071 lb.

## Size 35 Receptacles

### Floating Receptacles (Class A)

#### 2350-18F-Z3CT

**.193 DIA. +.002/-.000**  
**(4.90 DIA. +.05/-.00 mm)**

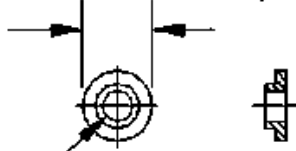


**Part No.:** 2350-18F-Z3CT  
**Materials:** Same as 2350-18-Z3CT Receptacle  
**Weight:** .0072 lb. (this figure includes two 2350-18F-5-Z3CT spacers)  
**Float:** .050 (1.27 mm) All Directions (Otherwise same as 2350-18-Z3CT receptacle.)

#### Spacers

2 included with 2350-18F-Z3CT

**.224 +/- .003**  
**(5.69 +/- .08 mm)**



**.096 DIA. +.004/-.000**  
**(2.44 DIA. +.10/-.00 mm)**

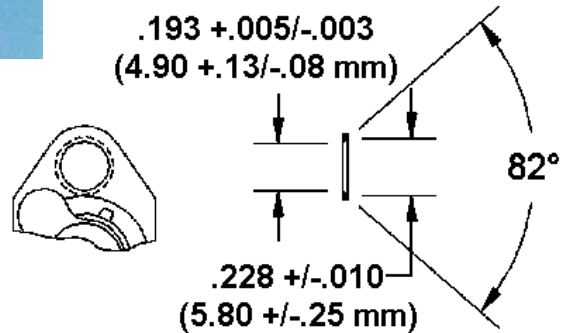
**Part No.:** 2350-18F-5-Z3CT  
**Material:** Same as receptacle base.



#### 2350-18F-24734-Z3CT

For thin paneling,  
 .032 (.81 mm) or less.  
 (Otherwise same as  
 2350-18F-Z3CT receptacle)

**.193 +.005/-.003**  
**(4.90 +.13/-.08 mm)**



**.228 +/- .010**  
**(5.80 +/- .25 mm)**

**Materials:** Same as 2350-18-Z3CT receptacle  
**Weight:** .0072 lb. (this figure includes two 2350-18F-24734-1-Z3CT Spacers.)

#### Spacers

2 included with 2350-18F-24734-1-Z3CT

**.224 +/- .003**  
**(5.69 +/- .08 mm)**

**.035 +/- .002**  
**(.89 +/- .05 mm)**

**.096 +.004/-.000**  
**(2.44 +.10/-.00 mm)**

**.143 +/- .002**  
**(3.63 +/- .05 mm)**

**.187 +/- .002**  
**(4.75 +/- .05 mm)**

**82°**

**Part No.:** 2350-18F-24734-1-Z3CT  
**Material:** Same as receptacle base.

# SU-2300 Line

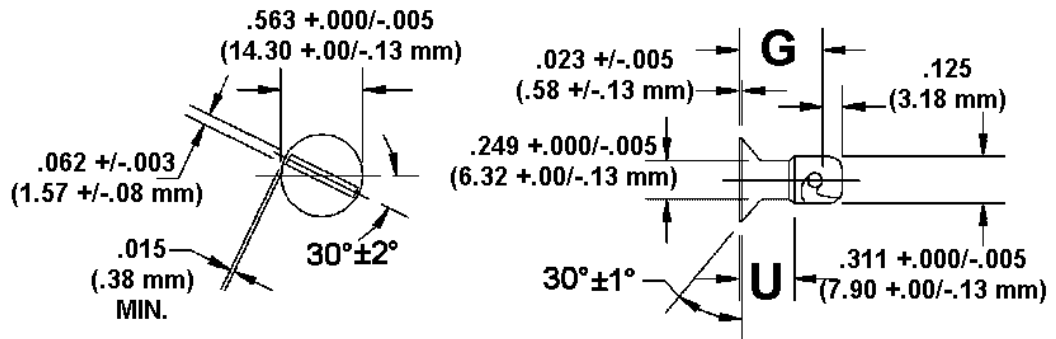


## Size 5

## Flush, Oval and Wing Head Studs

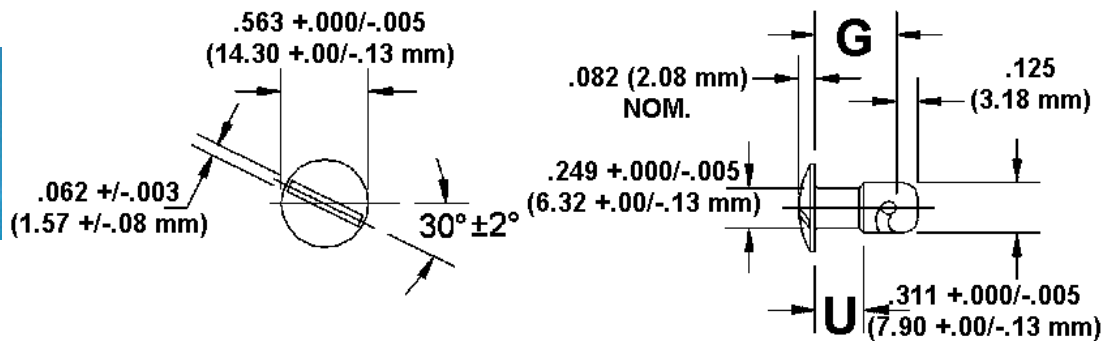
### Flush Head

2506-20 Stud Type 1



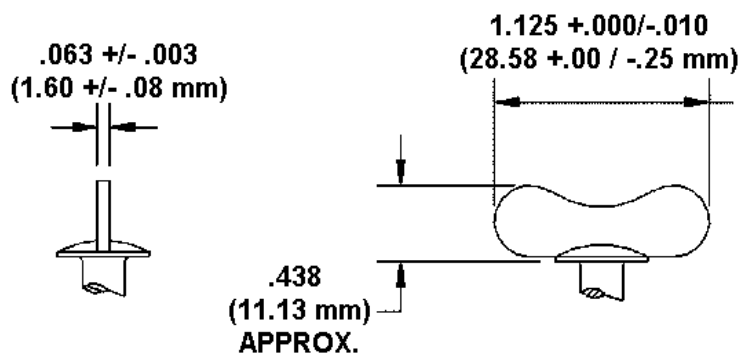
### Oval Head

2501-20 Stud Type 2



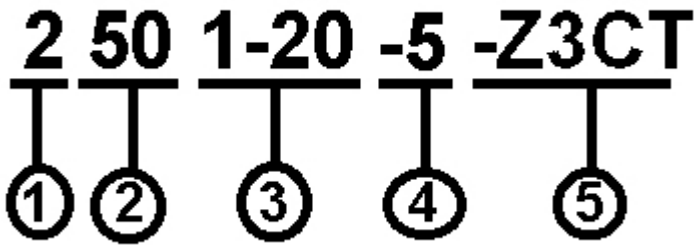
### Wing Head

2501-W20 Stud Type 3

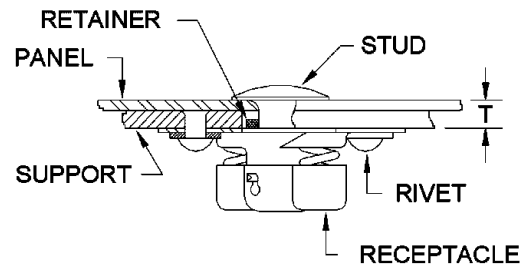


Otherwise same as 2501-20 stud.

## Size 5 Stud Part Numbers



1. Product Line (2 = SU-2300)
2. Shank Diameter x 1/16" (50 = 5.0)
3. Head Style (1-20 = Oval Head)
4. Stud Length Callout (see table below)
5. Finish Suffix



T TOTAL THICKNESS		STUD LENGTH CALLOUT	STUD SHANK DIMENSIONS				STUD WEIGHTS (LB. EA.)		
			G		U		FLUSH	OVAL	WING
In.	Mm		In.	(mm)	In.	mm	2506-20	2501-20	2501-W20
.021 - .050	0.53 - 1.27	-5	.350	8.89	.170	4.32	.00775	.00745	.01299
.051 - .080	1.27 - 2.03	-8	.380	9.65	.210	5.33	.00828	.00798	.01352
.081 - .110	2.03 - 2.79	-11	.410	10.41	.250	6.35	.00880	.00850	.01404
.111 - .140	2.79 - 3.56	-14	.440	11.18	.250	6.35	.00933	.00903	.01457
.141 - .170	3.56 - 4.32	-17	.470	11.94	.280	7.11	.00985	.00955	.01509
.171 - .200	4.32 - 5.08	-20	.500	12.70	.330	8.38	.01038	.01008	.01548
.201 - .230	5.08 - 5.84	-23	.530	13.46	.370	9.40	.01090	.01060	.01614
.231 - .260	5.84 - 6.60	-26	.560	14.22	.370	9.40	.01143	.01113	.01667
.261 - .290	6.60 - 7.37	-29	.590	14.99	.410	10.41	.01195	.01165	.01719
.291 - .320	7.37 - 8.13	-32	.620	15.75	.450	11.43	.01248	.01218	.01772
.321 - .350	8.13 - 8.89	-35	.650	16.51	.490	12.45	.01300	.01270	.01824
.351 - .380	8.89 - 9.65	-38	.680	17.27	.490	12.45	.01353	.01323	.01877
.381 - .410	9.65 - 10.41	-41	.710	18.03	.530	13.46	.01405	.01375	.01929
.411 - .440	10.41 - 11.18	-44	.740	18.80	.570	14.48	.01458	.01428	.01982

**MATERIALS:** Hardened carbon steel studs, carbon steel wings

**FINISH:** Zinc Trivalent Clear .0003 thick. Trivalent Chromate Clear with Sealer (RoHS Compliant) per ASTM-B-633, Type III, SC2 Clear

**FINISH SUFFIX:** -Z3CT.

The above mentioned finish will be supplied as the standard finish upon depletion of existing stock which are finished as follows: Cadmium electroplated .0003 thick, clear chromate per QQ-P-416, Type I, Class 2, Clear Finish suffix -C3C.

See page **SU-25** for additional finishes that may be available for this part.

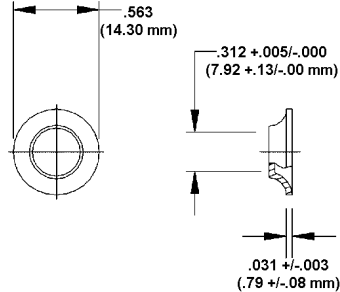
# SU-2300 Line



## Size 5 Retainers

### Type 127H Half Grommet

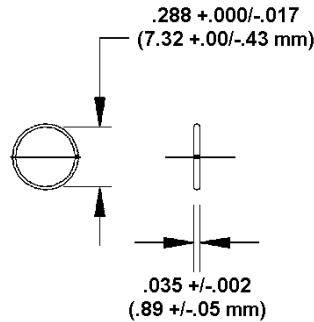
For use with 1506-20, 2501-20, and 2501-W20 Studs



**Part No.:** 127H-5  
**Material:** Aluminum  
**Weight:** .00069 lb.

### Snap Ring

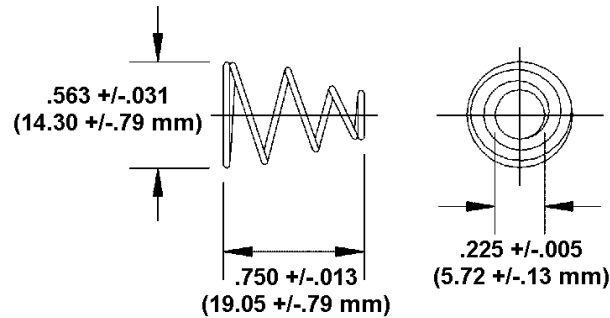
For use with 2506-20, 2501-20, and 2501-W20 studs



**Part No.:** 1219-R5-SS  
**Material:** Stainless steel, 300 series, spring temper  
**Weight:** .00027 lb.

### Retaining Spring

For use with 2501-20 and 2501-W20 studs



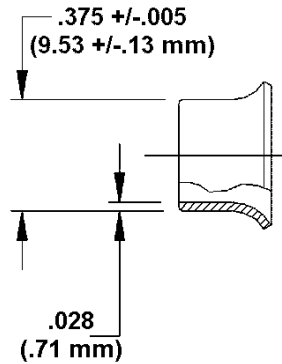
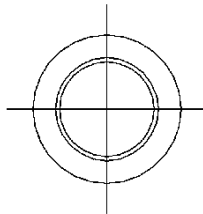
**Part No.:** 1219-24510-SS  
**Material:** Stainless steel, 300 series, spring temper.  
**Weight:** .00144 lb.

## Size 5 Retainers

### Full Grommet

#### Type 1271

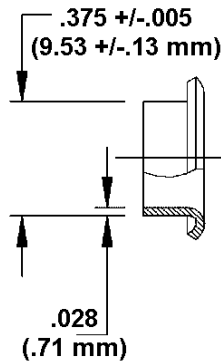
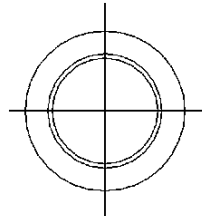
For 2501-20 and 2501-W20 studs



**Material:** Aluminum

#### Type 1276

For 2506-20 studs



**Material:** Aluminum

### Part Numbers

Panel Thickness	Type 1271	Type 1276
.031" to .062" (0.79 to 1.57 mm)	1271-5312	1276-5175
.063" to .094" (1.57 to 2.39 mm)	1271-5350	1276-5225
.095" to .125" (2.39 to 3.18 mm)	1271-5375	1276-5250

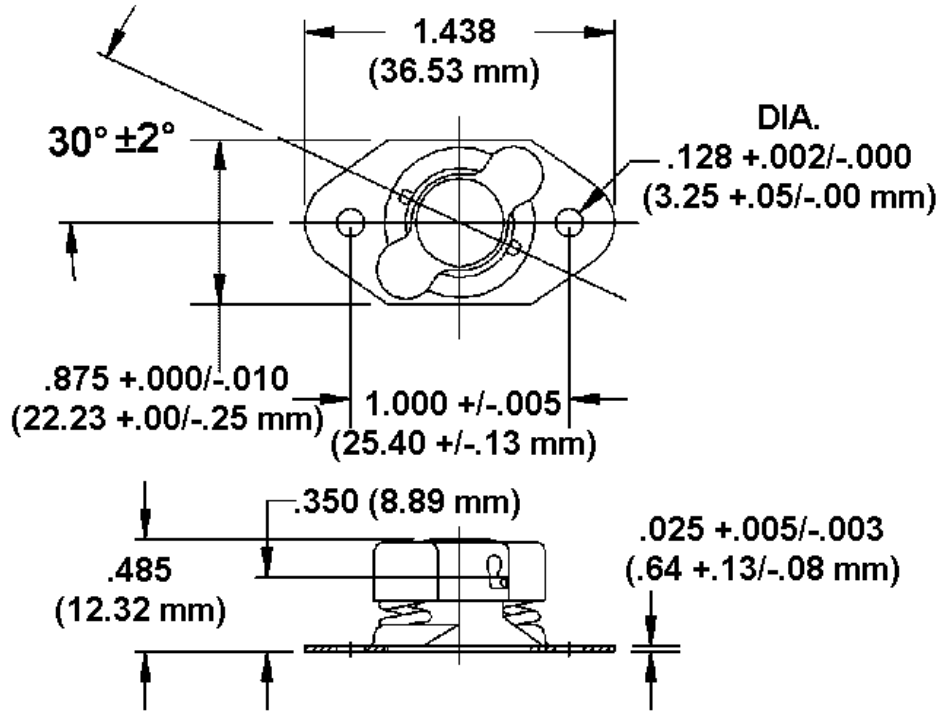
# SU-2300 Line



## Size 5 Receptacles

### Rigid Receptacle 2500-18-Z3CT (Class B)

For use with any Size 5 SU-2300 Line Stud



#### MATERIALS:

Receptacle base and Spring Cap: steel

Spring and Pin: Music Wire

**FINISH:** Zinc Trivalent Clear .0003 thick. Trivalent Chromate Clear with Sealer (RoHS Compliant) per ASTM-B-633, Type III, SC2 Clear

**FINISH SUFFIX:** -Z3CT.

The above mentioned finish will be supplied as the standard finish upon depletion of existing stock which are finished as follows: Cadmium electroplated .0003 thick, clear chromate per QQ-P-416, Type I, Class 2, Clear Finish suffix -C3C.

See page **SU-25** for additional finishes that may be available for this part.

**Weight:** .0171 lb.



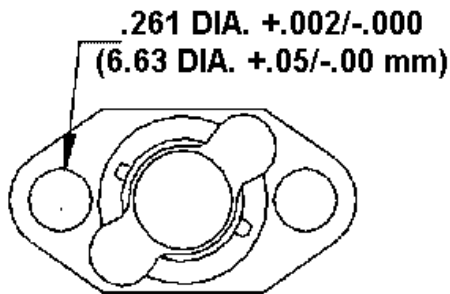
## Size 5 Receptacles

### Floating Receptacle 2500-18F-Z3CT (Class A)

For use with any Size 5 SU-2300 Line Stud

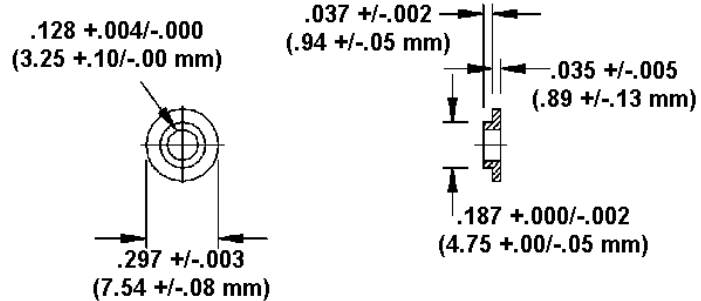


**Receptacle**  
Part No.: 2500-18F-Z3CT



**Material:** Same as 2500-18-Z3CT Receptacle

**Spacer**  
Part No.: 2500-18F-5-Z3CT  
(Two (2) included with 2500-18F-Z3CT Receptacle)



**Material:** Same as receptacle base.

**Weight:** .0183 lb. (This includes two 2500-18F-5-Z3CT spacers)

**Float:** .074 (1.88 mm) All Directions  
(Otherwise same as 2500-18-Z3CT Receptacle)

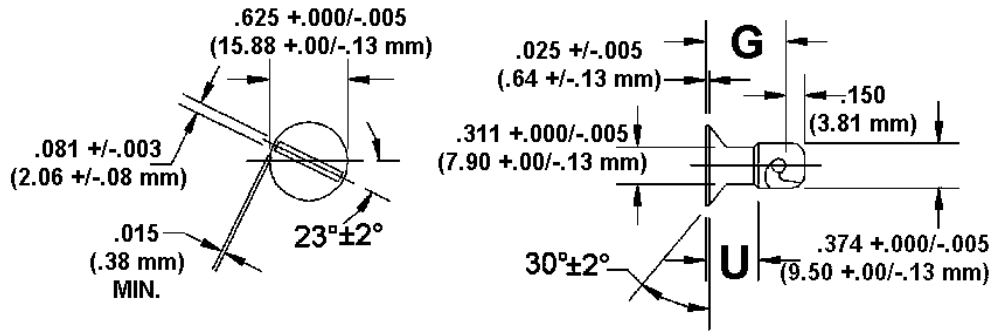
# SU-2300 Line



## Size 6 Flush, Oval, and Wing Head Studs

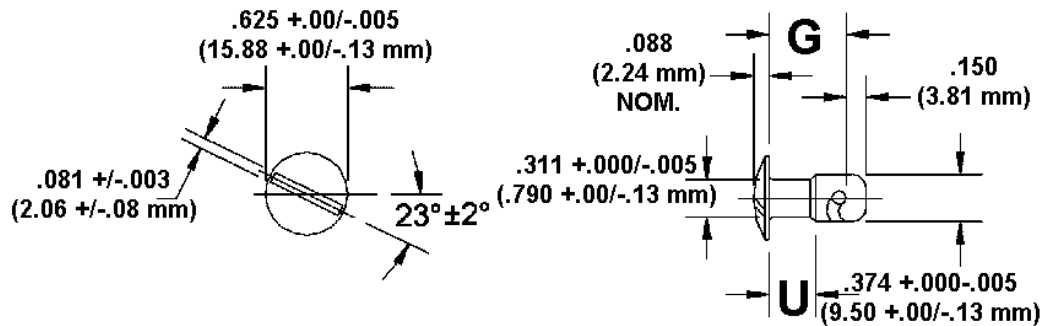
### Flush Head

2606-20 Stud Type 1



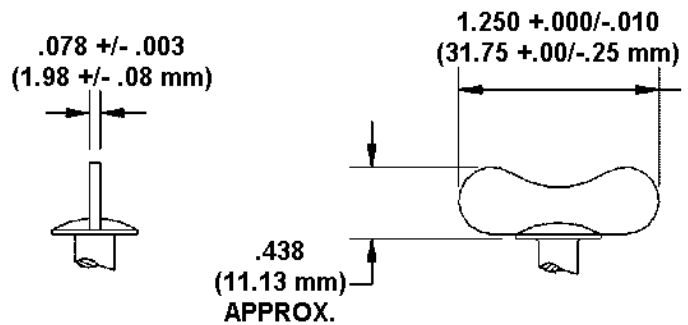
### Oval Head

2601-20 Stud Type 2



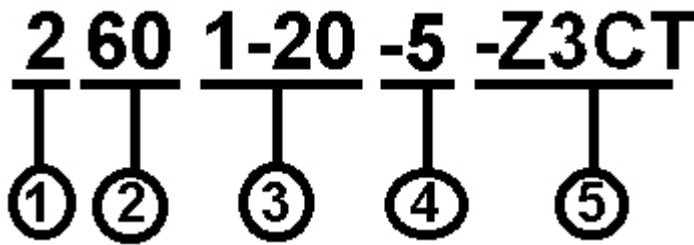
### Wing Head

2601-W20 Stud Type 3

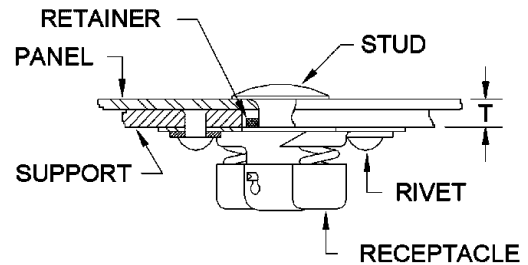


Otherwise same as 2601-20 stud.

## Size 6 Stud Part Numbers



1. Product Line (2 = SU-2300)
2. Shank Diameter x 1/16" (60 = 6.0)
3. Head Style (1-20 = Oval Head)
4. Stud Length Callout (see table below)
5. Finish Suffix



T TOTAL THICKNESS		STUD LENGTH CALLOUT	STUD SHANK DIMENSIONS				STUD WEIGHTS (LB. EACH)		
			G		U		FLUSH	OVAL	WING
In.	mm		In.	mm	In.	mm	2606-20	2601-20	2601-W20
.021" - .050"	0.53 - 1.27	-5	.410"	10.41	.180"	4.57	.01200	.01260	.02097
.051" - .080"	1.27 - 2.03	-8	.440"	11.18	.230"	5.84	.01272	.01332	.02169
.081" - .110"	2.03 - 2.79	-11	.470"	11.94	.280"	7.11	.01344	.01404	.02241
.111" - .140"	2.79 - 3.56	-14	.500"	12.70	.280"	7.11	.01416	.01476	.02313
.141" - .170"	3.56 - 4.32	-17	.530"	13.46	.330"	8.38	.01488	.01548	.02385
.171" - .200"	4.32 - 5.08	-20	.560"	14.22	.330"	8.38	.01560	.01620	.02457
.201" - .230"	5.08 - 5.84	-23	.590"	14.99	.380"	9.65	.01632	.01692	.02529
.231" - .260"	5.84 - 6.60	-26	.620"	15.75	.430"	10.92	.01704	.01764	.02601
.261" - .290"	6.60 - 7.37	-29	.650"	16.51	.430"	10.92	.01776	.01836	.02673
.291" - .320"	7.37 - 8.13	-32	.680"	17.27	.480"	12.19	.01848	.01908	.02745
.321" - .350"	8.13 - 8.89	-35	.710"	18.03	.480"	12.19	.01920	.01980	.02817
.351" - .380"	8.89 - 9.65	-38	.740"	18.80	.530"	13.46	.01992	.02052	.02889
.381" - .410"	9.65 - 10.41	-41	.770"	19.56	.580"	14.73	.02064	.02124	.02961
.411" - .440"	10.41 - 11.18	-44	.800"	20.32	.580"	14.73	.02136	.02196	.03033
.441" - .470"	11.18 - 11.94	-47	.830"	21.08	.630"	16.00	.02208	.02268	.03105
.471" - .500"	11.94 - 12.70	-50	.860"	21.84	.630"	16.00	.02280	.02340	.03177

**MATERIALS:** Hardened carbon steel studs, carbon steel wings

**FINISH:** Zinc Trivalent Clear .0003 thick. Trivalent Chromate Clear with Sealer (RoHS Compliant) per ASTM-B-633, Type III, SC2 Clear

**FINISH SUFFIX:** -Z3CT.

The above mentioned finish will be supplied as the standard finish upon depletion of existing stock which are finished as follows: Cadmium electroplated .0003 thick, clear chromate per QQ-P-416, Type I, Class 2, Clear Finish suffix -C3C.

See page **SU-25** for additional finishes that may be available for this part.

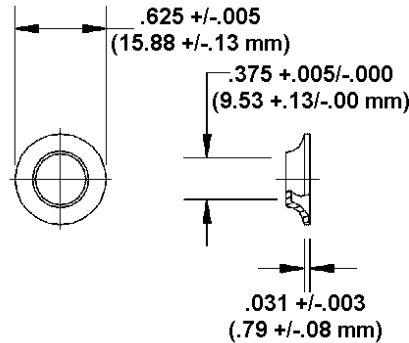
# SU-2300 Line



## Size 6 Retainers

### Type 127H Half Grommet

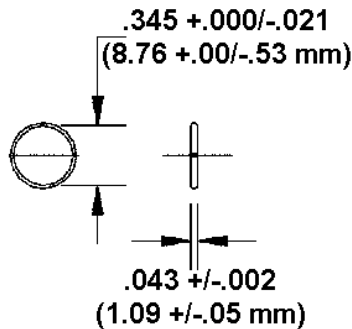
For use with 2606-20, 2601-20, and 2601-W20 studs



**Part No.:** 127H-6  
**Material:** Aluminum  
**Weight:** .00069 lb.

### Snap Ring

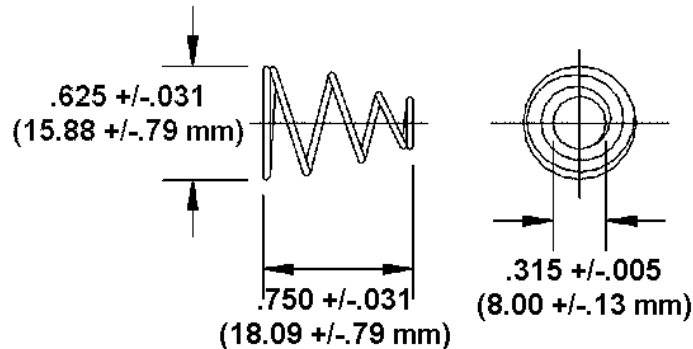
For use with 2606-20, 2601-20, and 2601-W20 studs



**Part No.:** 1219-R6-SS  
**Material:** Stainless steel, 300 series, spring temper  
**Weight:** .00027 lb

### Retaining Spring

For use with 2601-20 and 2601-W20 studs



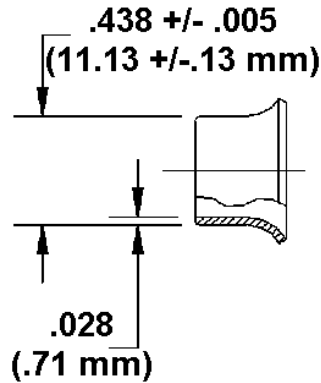
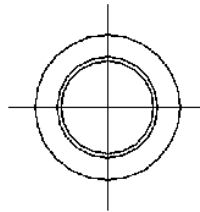
**Part No.:** 1219-24518-SS  
**Material:** Stainless steel, 300 series, spring temper.  
**Weight:** .00144 lb

## Size 6 Retainers

### Full Grommet

#### Type 1271

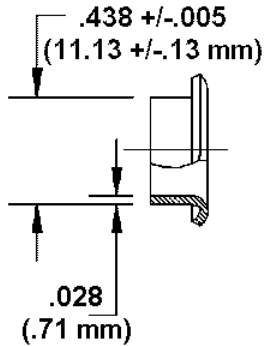
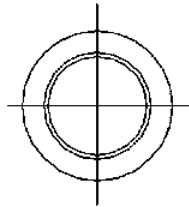
For 2601-20 and 2601-W20 studs



**Material:** Aluminum

#### Type 1276

For 2606-20 studs



**Material:** Aluminum

#### Part Numbers

Panel Thickness	Type 1271	Type 1276
.040" to .065" (1.02 to 1.65 mm)	1271-6350	1276-6218
.066" to .100" (1.65 to 2.54 mm)	1271-6375	1276-6250
.101" to .135" (2.54 to 3.43 mm)	1271-6425	1276-6300

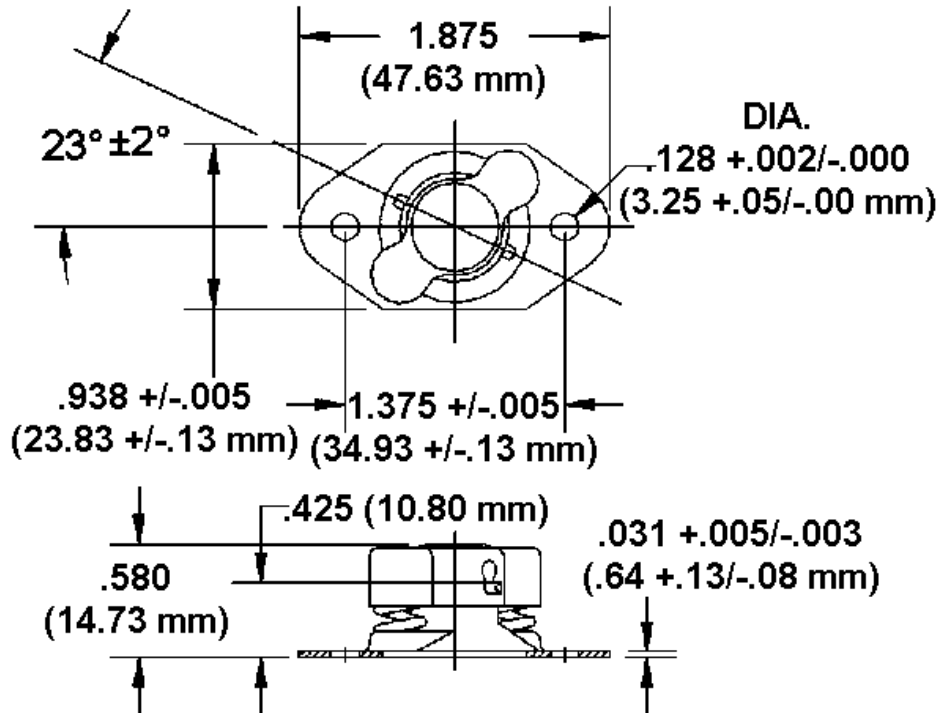
# SU-2300 Line



## Size 6 Receptacles

### Rigid Receptacle 2600-18-Z3CT (Class B)

For use with any Size 6 SU-2300 Line Stud



#### MATERIALS:

Receptacle base and Spring Cap: steel

Spring and Pin: Music Wire

**FINISH:** Zinc Trivalent Clear .0003 thick. Trivalent Chromate Clear with Sealer (RoHS Compliant) per ASTM-B-633, Type III, SC2 Clear

**FINISH SUFFIX:** -Z3CT.

The above mentioned finish will be supplied as the standard finish upon depletion of existing stock which are finished as follows: Cadmium electroplated .0003 thick, clear chromate per QQ-P-416, Type I, Class 2, Clear Finish suffix -C3C.

See page **SU-25** for additional finishes that may be available for this part.

**Weight:** .0333 lb.

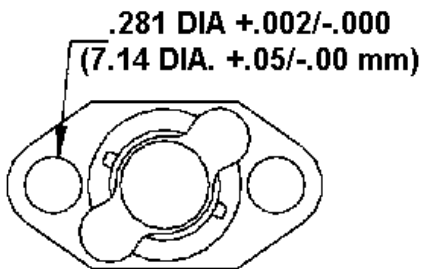
## Size 6 Receptacles

### Floating Receptacle 2600-18F-Z3CT (Class A)

For use with any size 6 SU-2300 Line Stud



**Receptacle**  
Part No.: 2600-18F-Z3CT



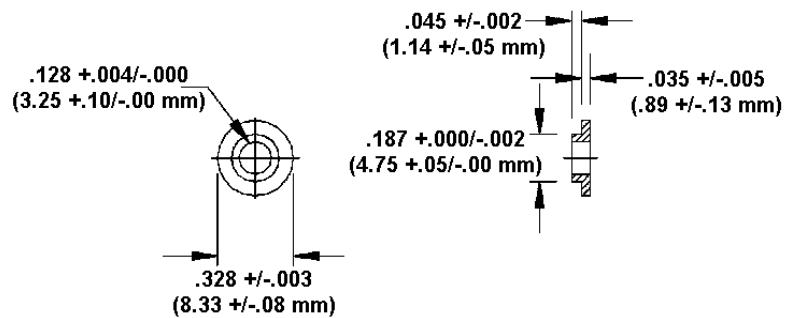
**Material:** Same as 2600-18-Z3CT

**Weight:** .0346 lb. (This includes two 2600-18F-5-Z3CT spacers)

**Float:** .094 (2.39 mm) All Directions

(Otherwise same as 2600-18-Z3CT Receptacle)

**Spacer**  
Part No.: 2600-18F-5-Z3CT  
2 included with 2600-18F-Z3CT receptacle



**Material:** Same as receptacle base.

# SU-2300 Line



---

This page intentionally blank





# SU-2300 Line

## Optional Finishes

Finish Suffix	Stud	Receptacle	Finish Description	Specification(s)
N4F	N/A		Nickel plate .0004 thick, with copper undercoating – dull	QQ-N-290, CLASS 1, GRADE F
Z3CT			Zinc Trivalent Clear .0003 Thick. Trivalent Chromate Clear with Sealer	ASTM-B-633, Type III, SC 2 Clear
Z3YT			Zinc Trivalent Yellow .0003 thick, Trivalent Chromate Yellow Dye with Sealer	ASTM-B-633, Type III, SC2, Yellow

# SU-2300 Line



---

This page intentionally blank



# SU-2300 Line

---

This page intentionally blank

# SU-2300 Line

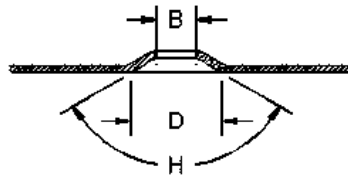


## Stud Installation

### Flush Head with 127H Half Grommet

1. Drill and dimple hole in panel.

Type of Stud	Dia. Before Dimpling	U +.010 -.000 (+.25 -.00 mm) (Dia. After dimpling)	D +.010 -.000 (+.25 -.00 mm)	H ±2°
2356-20	.198" (5.03 mm)	.218" (5.54 mm)	.406" (10.31 mm)	100°
2506-20	.297" (7.54 mm)	.312" (7.92 mm)	.640" (16.26 mm)	120°
2606-20	.359" (9.13 mm)	.375" (9.53 mm)	.710" (18.03 mm)	120°

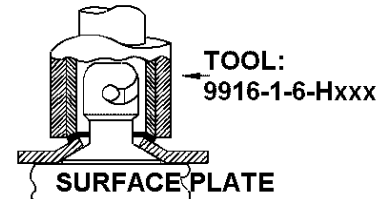


**Note:** Dimpling tool not supplied.

2. Insert stud and slip grommet over stud.



3. Flatten Grommet.



The triple-x (xxx) in the tool number is for the size. (35, 5, 6) E.g., 9916-1-6-H35

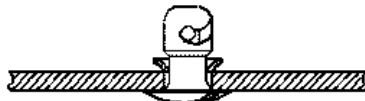
### Oval / Wing Head with 127H Half Grommet

1. Drill hole in panel.

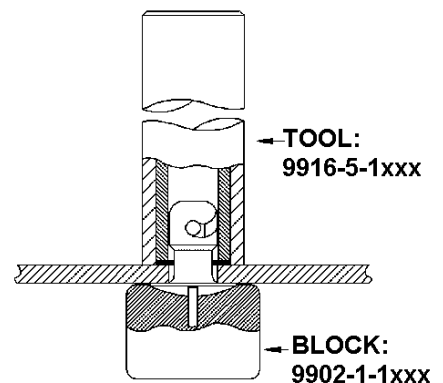


Stud Type	Hole Diameter
2351-20, 2351-W20	.219" (5.56 mm)
2501-20, 2501-W20	.313" (7.95 mm)
2601-20, 2601-W20	.375" (9.53 mm)

2. Insert stud and slip grommet over stud.



3. Flatten Grommet.

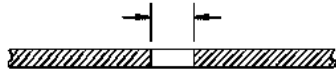


The triple-x (xxx) in the tool number is for the size. (35, 5, 6) E.g., 9916-5-135

## Stud Installation

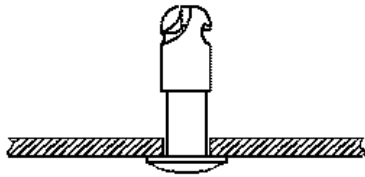
### Oval / Wing Head with Retaining Ring or Retaining Spring

1. Drill hole in panel

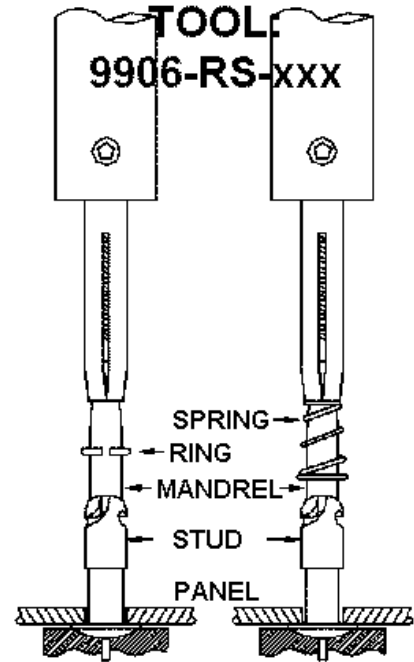


Stud Type	Hole Diameter
2351-20, 2351-W20	.219" (5.56 mm)
2501-20, 2501-W20	.313" (7.95 mm)
2601-20, 2601-W20	.375" (9.53 mm)

2. Insert stud



3. Slip mandrel into stud. Place ring or spring over mandrel. Place tool over mandrel. Push retainer until it is seated in stud undercut.



**BLOCK:**

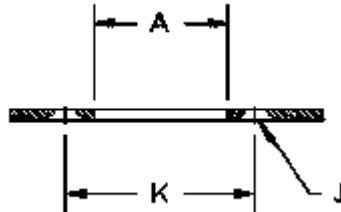
**9902-1-1xxx**

The triple-x (xxx) in the tool number is for the size. (35, 5, 6)  
E.g., 9906-RS-35

# SU-2300 Line

## Receptacle Installation

1. Drill holes and countersink rivet holes.



SU-2300 Stud Size	A ± .010 (±.25 mm)	K ± .005 (±.13 mm)	J	Drill Size	Countersink	Rivet
35	.468" (11.89 mm)	.750" (19.05 mm)	.096" (2.44 mm)	#41 (.096") (2.44 mm)	3/16D (4.76 mm) x 110°	3/32" (2.38 mm)
5	.703" (17.86 mm)	1.000" (25.40 mm)	.128" (3.25 mm)	#30 (.128") (3.25 mm)	1/4D (6.35 mm) x 110°	1/8" (3.18 mm)
6	.812" (20.62 mm)	1.375" (34.93 mm)	.128" (3.25 mm)	#30 (.128") (3.25 mm)	1/4D (6.35 mm) x 110°	1/8" (3.18 mm)

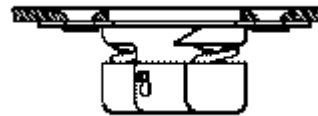
### Type 2xx0-18 – Rigid Receptacle

2. Rivet Receptacle.



### Type 2xx0-18F – Floating Receptacle

2. Place spacers in receptacle holes.



3. Rivet receptacle.





# SU-2300 Line

---

This page intentionally blank

# SU-2300 Line



---

This page intentionally blank