

STIMPSON

GROMMETS

Catalog 100-A



World's Largest Producer of Grommets & Washers

An Introduction to the Stimpson Company, established 1852...

For a purchase and sales transaction to be truly successful, all parties must benefit. We realize our success depends on YOU, our Customer. Given the opportunity, we are prepared to do our part by providing you with friendly, helpful service; by maintaining the largest inventories in the industry; and by providing products unmatched for quality, supported by on-time delivery and attractive pricing.

Our goal is **SUCCESS TOGETHER**



In 1852, the Edwin B. Stimpson Company opened a 1,500 square foot factory in Lower Manhattan at what would be, 31 years following, the foot of the Brooklyn Bridge.

Today, over 150 years later, our 275,000 square foot facility located in Pompano Beach, Florida, is operating with the most advanced, state-of-the-art, high-speed automated equipment, producing the largest variety of standard and special eyelets, grommets and washers, and hole plugs of any single company in the world.

Over the last 25 years alone, Stimpson has shipped over 200 billion parts including Eyelets, Grommets, Washers, Hole Plugs, Snap Fasteners, CE® Rivets, Clamps, Corners, Ferrules, Contacts, Connectors, Arrows, Shells, Vents, Spots, Stampings, Terminals and Quick Rivets.

Placed end to end, those parts would circle the globe 65 times...no small feat considering the size of our products!

*And, we thank you, our Customer,
for making it possible.*





Sheet Metal Grommets with Plain, Teeth and Neck Washers

Stimpson Grommets and Washers are available in brass, aluminum or zinc; in their base metal or with popular finishes such as nickel and dull black chemical. Many sizes are also available in stainless steel. And because Stimpson maintains the largest inventory of Grommets and Washers in the industry, even orders calling for popular finishes will be in stock and ready for immediate shipment.

All Stimpson Grommets and Washers are made in the U.S.A., meet the latest government and commercial specifications, and are supported by a full line of grommeting machines.

Sheet Metal Grommet Dimensions

Grommet	Hole Size	Flg. Dia.	L.U.F.	MT
#00G	3/16"	.425	.135	.009
#0G	1/4"	.545	.175	.012
#1G	9/32"	.687	.185	.012
#1JG	9/32"	.680	.263	.0126
#2G	3/8"	.815	.215	.013
#2JG	3/8"	.840	.260	.016
#3G	7/16"	.970	.295	.014
#4G	1/2"	1.050	.375	.016
#5G	5/8"	1.220	.330	.016
#6G	13/16"	1.750	.232	.020

Plain Washer Dimensions

Washer	Grommet Size	I.D.	O.D.	MT
#00W	#00G	.218	.460	.009
#0W	#0G	.289	.546	.010
#1W	#1G	.359	.700	.012
#1W	#1JG	.359	.700	.012
#2W	#2G	.453	.835	.012
#2W	#2JG	.453	.835	.012
#3W	#3G	.530	.955	.013
#4W	#4G	.585	1.062	.013
#5W	#5G	.740	1.205	.0135
#6W	#6G	.875	1.828	.020

Teeth Washer Dimensions

Washer	Grommet Size	I.D.	O.D.	MT
#0TW	#0G	.290	.570	.0115
#1TW	#1G	.350	.680	.014
#1TW	#1JG	.350	.680	.014
#2TW	#2G	.468	.840	.012
#2JTW	#2JG	.468	.840	.016
#3TW	#3G	.545	.945	.013
#4TW	#4G	.593	1.050	.016
#5TW	#5G	.720	1.190	.017

Neck Washer Dimensions

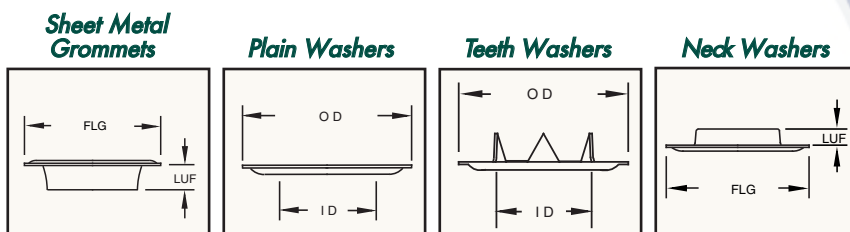
Washer	Grommet Size	Flg. Dia.	L.U.F.	MT
#00NW*	#00G	.425	.125	.010
#0NW*	#0G	.531	.100	.010
#1NW*	#1G	.705	.105	.010
#1NW*	#1JG	.705	.105	.010
#2NW*	#2G	.840	.095	.013
#2JNW*	#2JG	.840	.095	.013
#3NW*	#3G	.945	.125	.014
#4NW*	#4G	1.050	.125	.015

Sheet Metal Grommets - Can be used interchangeably with plain, teeth or neck washers.

Plain Washers - Basic reinforcement, providing support for the grommet setting.

Teeth Washers - A firmer, tighter grasp, particularly in woven materials.

Neck Washers - Telescoping, barrel to barrel setting, reinforces the hole with two entire parts.



PACKAGING: Normally Grommets and Washers are shipped in bulk, however they may also be packed in 1, 5 or 10 gross boxes at additional cost. Self-Piercing Grommets and Washers are packed 500 pieces to a box at no additional cost.

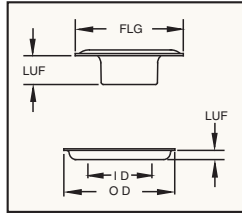
GOVERNMENT CONTRACTS: Stimpson Grommets and Washers conform to U.S. Military specifications and may be ordered by Military **Type** and **Class** Numbers. See page 5.

Hole Size is the approximate measurement after setting. All dimensions are in inches.

* Indicates Scored Eyelet



Self-Piercing Grommets & Washers



"No Hole Needed" Stimpson Self-Piercing Grommets are made from heavier gauge brass than traditional sheet metal grommets and, when set with their matching washers, pierce and set in a single action without the need for a pre-punched hole. Just place the grommet in the top set, lay the washer on the bottom set, position your work, and pierce and set in one action.

Stimpson Self-Piercing Grommets and Washers are available in brass and can be furnished with a nickel or dull black chemical finish. They can be set with Stimpson's "no hole needed" tooling or with the existing self-piercing tooling widely available in the marketplace.

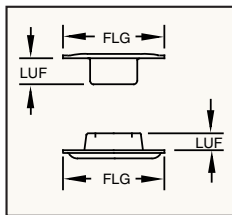
Terminology	
L.U.F. = Length Under Flange	I.D. = Inside Diameter
Flg. Dia. = Flange Diameter	O.D. = Outside Diameter
MT= Metal Thickness	

Self-Piercing Grommet Dimensions

Grommet	Hole Size	Flg. Dia.	L.U.F.	MT
#0SPG	1/4"	.550	.165	.015
#1SPG	5/16"	.630	.200	.015
#1XLSPG	5/16"	.630	.320	.015
#2SPG	3/8"	.750	.200	.015
#3SPG	7/16"	.970	.185	.015

Self-Piercing Washer Dimensions

Washer	Grommet Size	I.D.	O.D.	MT
#0SPW	#0SPG	.337	.575	.011
#1SPW	#1SPG	.400	.655	.011
#1SPW	#1XLSPG	.400	.655	.011
#2SPW	#2SPG	.437	.770	.011
#3SPW	#3SPG	.546	.970	.011



Telescoping Eyelets with Neck Washers



The eyelet alternative in a telescoping setting. Additional sizes are available.

Telescoping Eyelet Dimensions

Eyelet	Hole Size	Flg. Dia.	L.U.F.	MT
A1445	.177	.403	.210	.0135
A1181	.273	.535	.155	.010
A1998	.270	.540	.120	.016
A1333	.274	.545	.145	.013

Neck Washer Dimensions

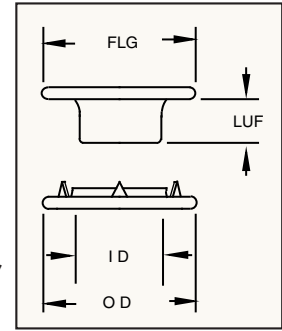
Washer	Eyelet Size	Flg. Dia.	L.U.F.	MT
#00NW*	A1445	.425	.125	.010
#0NW*	A1181	.531	.100	.010
#0NW*	A1998	.531	.100	.010
A1334	A1333	.562	.080	.009

* Indicates Scored Eyelet



Rolled Rim Grommets with Spur Washers

Stimpson Rolled Rim Grommets and Spur Washers are available in brass and zinc, with some sizes also offered in stainless steel. These parts interlock, their teeth grasping the material, to provide a rugged, unyielding setting. Offered with popular finishes such as nickel and dull black chemical.



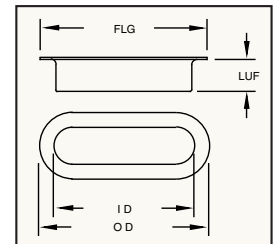
Rolled Rim Grommet Dimensions

Grommet	Hole Size	Flg. Dia.	L.U.F.	MT
#ORRG	9/32"	.670	.175	.016
#OLRRG	9/32"	.670	.240	.016
#OXLRRG	9/32"	.670	.300	.016
#1RRG	13/32"	.790	.205	.016
#2RRG	7/16"	.890	.255	.018
#2XLRRG	7/16"	.890	.348	.018
#3RRG	15/32"	.970	.255	.020
#4RRG	9/16"	1.120	.320	.020
#5RRG	5/8"	1.285	.380	.021
#6RRG	3/4"	1.535	.420	.025
#7RRG	29/32"	1.725	.446	.020
#8RRG	1-3/32"	1.865	.465	.025
D5282	1-1/2"	2.390	.355	.020

Spur Washer Dimensions

Washer	Grommet Size	I.D.	O.D.	MT
#OSW	#ORRG	.345	.645	.016
#OSW	#OLRRG	.345	.645	.016
#OSW	#OXLRRG	.345	.645	.016
#1SW	#1RRG	.455	.790	.016
#2SW	#2RRG	.512	.890	.018
#2SW	#2XLRRG	.512	.890	.018
#3SW	#3RRG	.537	.970	.020
#4SW	#4RRG	.645	1.120	.020
#5SW	#5RRG	.777	1.270	.021
#6SW	#6RRG	.875	1.505	.025
#7SW	#7RRG	1.062	1.725	.020
#8SW	#8RRG	1.195	1.910	.020
D5274	D5282	1.560	2.360	.020

Oblong Grommets & Washers



Stimpson Oblong Grommets and Washers are offered in brass, aluminum, zinc and stainless steel. Our most popular sizes are displayed below.

Oblong Grommet Dimensions

Grommet	Hole Size	Flg. Dia.	L.U.F.
A670	3/16" x 13/16"	1.315 x .665	.225
A671	5/16" x 1-7/16"	2.015 x .915	.332
A1496	11/32" x 1-11/16"	2.375 x .965	.308
A591	5/16" x 3/4"	1.125 x .690	.222
A113	1/4" x 1-1/8"	1.406 x .565	.269
A3537*	1/2" x 13/16"	1.405 x 1.035	.285

Oblong Washer Dimensions

Washer	Grommet Size	I.D.	O.D.
C501	A670	.923 x .268	1.286 x .625
C264	A671	1.532 x .420	2.010 x .915
C714	A1496	1.812 x .468	2.375 x .968
C189	A591	.800 x .400	1.125 x .685
C118	A113	1.187 x .312	1.437 x .562
C829*	A3537*	.925 x .575	1.405 x 1.035

* Indicates embossed oblong grommet & washer.

Military Specifications for Grommets & Washers



MILG16491 and NASM16491

Type	Type Definition	Class 1	Class 3	Size	Mil Spec Examples	Grommet/Washer Part #
Type I	Sheet Metal Grommet with Plain Washer	Plain	DBC	#00 - #6	MILG16491 Type I, Class 3, Size 4 NASM16491 Type I, Class 3, Size 4	#4 Sheet Metal Grommet with Plain Washer and DBC finish #4 Sheet Metal Grommet with Plain Washer and DBC finish
Type II	Sheet Metal Grommet with Teeth Washer	Plain	DBC	#0 - #5	MILG16491 Type II, Class 1, Size 2 NASM16491 Type II, Class 1, Size 2	#2 Sheet Metal Grommet with Teeth Washer #2 Sheet Metal Grommet with Teeth Washer
Type III	Rolled Rim Grommet with Spur Washer	Plain	DBC	#0 - #8	MILG16491 Type III, Class 3, Size 1 NASM16491 Type III, Class 3, Size 1	#1 Rolled Rim Grommet with Spur Washer and DBC finish #1 Rolled Rim Grommet with Spur Washer and DBC finish

MS20230 and NASM20230 (for Brass Sheet Metal Grommets and Plain Washers)

Spec	Type Definition	Size	Size Notes	MS Spec Examples	Grommet/Washer Part #
B	Brass Sheet Metal Grommet with Plain Washer	#00 - #6	Size 20 = #00 Size 10 = #0	MS20230B20 NASM20230B20	#00 Brass Sheet Metal Grommet with Plain Washer #00 Brass Sheet Metal Grommet with Plain Washer
GB	Brass Sheet Metal Grommet Only	#00 - #6		MS20230GB10 NASM20230GB10	#0 Brass Sheet Metal Grommet #0 Brass Sheet Metal Grommet
WB	Brass Plain Washer Only	#00 - #6		MS20230WB2 NASM20230WB2	#2 Brass Plain Washer #2 Brass Plain Washer

MS20230 and NASM20230 (for Brass Rolled Rim Grommets and Spur Washers)

Spec	Type Definition	Size	Size Notes	MS Spec Examples	Grommet/Washer Part #
BS	Brass Rolled Rim Grommet with Spur Washer	#0 - #8	Size 10 = #0	MS20230BS10 NASM20230BS10	#0 Brass Rolled Rim Grommet with Spur Washer #0 Brass Rolled Rim Grommet with Spur Washer
GBS	Brass Rolled Rim Grommet Only	#0 - #8		MS20230GBS1 NASM20230GBS1	#1 Brass Rolled Rim Grommet #1 Brass Rolled Rim Grommet
WBS	Brass Spur Washer Only	#0 - #8		MS20230WBS2 NASM20230WBS2	#2 Brass Spur Washer #2 Brass Spur Washer



Simpson Products Are Made In The USA...Manufactured With Pride...Shipped Worldwide



ISO 9001:2008 Certified • Simpson Cage Code #57771

Attaching Machines

Stimpson proudly offers the *Edward Segal* line of attaching machines.

Quality grommets and washers need to be supported by quality tooling and attaching machines.

Whether you require a hand operated bench machine or a fully automatic dual feed grommeting machine, Stimpson makes the finest quality products in the marketplace available to you, ensuring that your investment in new tooling or a new machine will be a wise one.



Hand Drive

Used with a wooden or rawhide mallet, Stimpson Hand Drive Tools can be used to set most Stimpson products.



Model 83GW

A dual feed, heavy duty grommeting machine which pierces your material while it automatically feeds and sets both the grommet and the washer all with one tripping of the electric foot switch. Available for rolled rim grommet sizes #0 to #4 with matching spur washer, and plain grommet and matching neck or teeth washer, sizes #00 to #4.

405 Bench Press

The versatile Stimpson 405 Bench Press is available with a heavy duty aluminum frame. Ideal for smaller projects or prototype work, it is especially well suited for setting Stimpson self-piercing grommets and washers in most lightweight fabrics.



Model 2KGW

Fully automatic, state-of-the-art electric dual feed grommet and washer machine with material hole punch out and thickness compensating technology. Available for Stimpson grommet and washer sizes #0 to #4.



Model 479

The Model 479, an ideal choice when production is limited, is available in foot, pneumatic and electric power formats. It is versatile enough to set most fasteners, and uses tools which are quickly interchangeable. The quality of its settings is equal to that of much larger automatic machines.



Model 4KGW

The newest grommet machine in Edward Segal's product line, the 4KGW uses pneumatic force and innovative toggle linkage to cut through multiple layers of the toughest fabrics. The 4KGW has fewer moving parts than mechanical grommeting machines, simplifying maintenance requirements. Available for Stimpson grommet and washer sizes #0 to #4.



Model 3P5

Model 3P5 is a portable pneumatic press specifically designed for grommet applications. This powerful compact press is capable of punching a hole in a wide range of industrial fabrics and attaching Stimpson grommets and washers (sizes #00 - #8), all in a single cycle. The 3P5 is available in two versions: one for standard fabrics and a second for heavier fabrics and larger grommets. All of the setting tools are interchangeable, and are simply threaded in place allowing for fast conversions.



Established 1852

1515 SW 13th Court • Pompano Beach, FL 33069-4710
(877) 765-0748 • Fax: (954) 545-7440

E-Mail: customer_service@stimpson.com • Web: www.stimpson.com



Established 1852

ISO 9001:2008 Certified

